



# MONTHLY MEMBERSHIP PROGRESS REPORT

District 7 N

Results as of: 10/31/2016

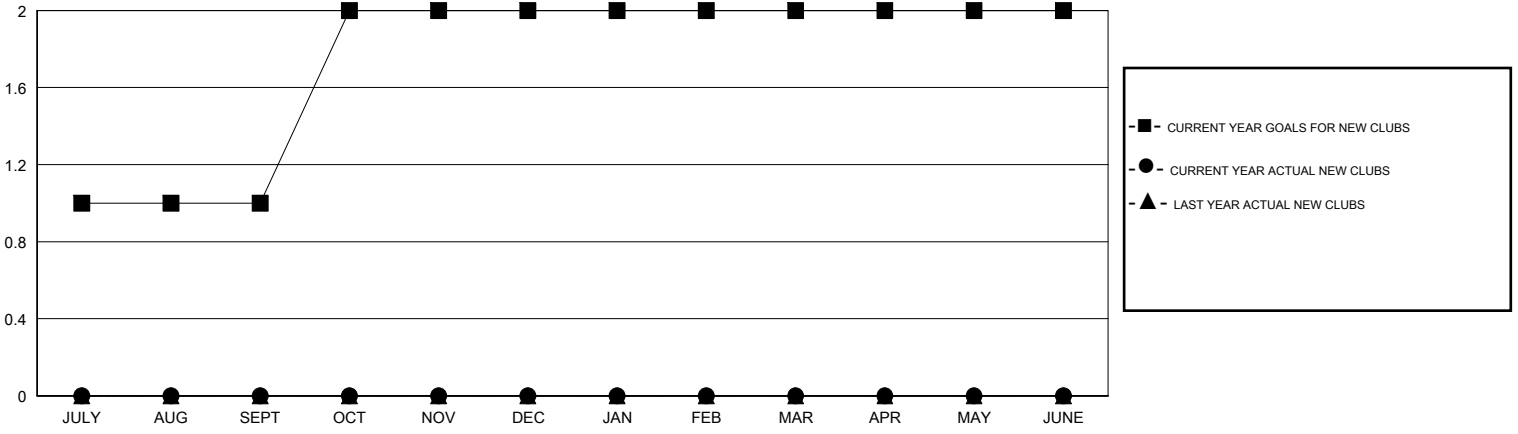
GMT: HAL GRIFFIN

LOCATION ARKANSAS

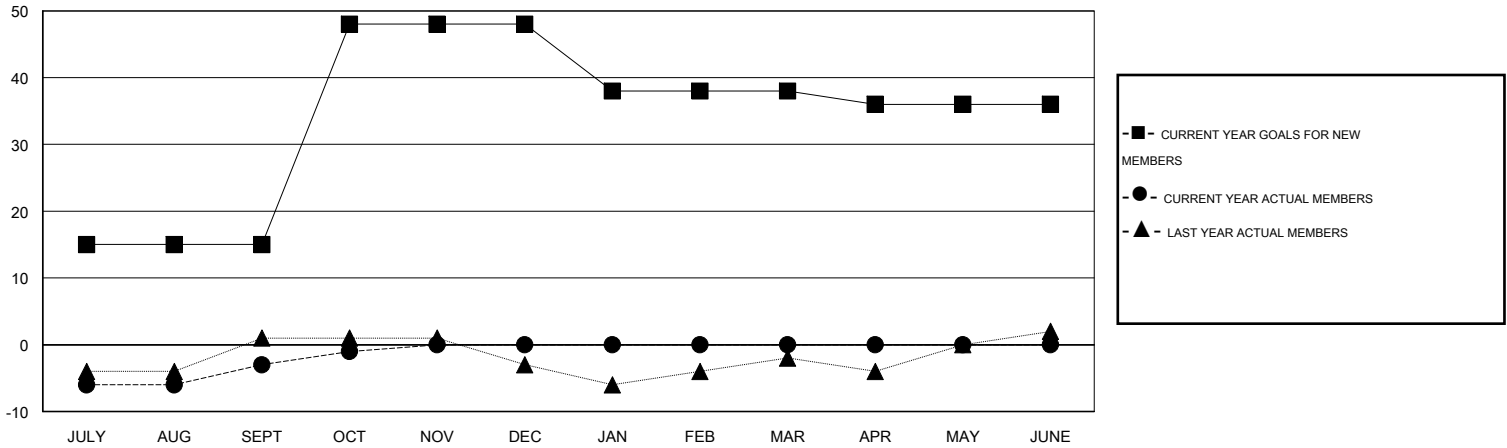
GMT CA 1

Clubs					Members				
RESULTS FOR 2016-2017					RESULTS FOR 2016-2017				
QUARTER	NEW CLUB GOAL	NEW CLUBS	DROPPED CLUBS	NET GAIN/LOSS	QUARTER	NEW MEMBER GOAL	CHARTER AND NEW MEMBERS ADDED	DROPPED MEMBERS	NET GAIN/LOSS
JULY/AUG/SEPT	1	0	0	0	JULY/AUG/SEPT	15	13	16	-3
OCT/NOV/DEC	1	0	0	0	OCT/NOV/DEC	33	2	0	2
JAN/FEB/MAR	0	0	0	0	JAN/FEB/MAR	-10	0	0	0
APR/MAY/JUNE	0	0	0	0	APR/MAY/JUNE	-2	0	0	0

GOALS AND ACTUAL NEW CLUBS CUMULATIVE



GOALS AND ACTUAL MEMBERS CUMULATIVE



DROPPED CLUBS: 0	10 CLUBS OF 34 ADDED 1 OR MORE NEW MEMBERS	<b>GENDER DISTRIBUTION</b> MALE 462 (61.68%) FEMALE 287 (38.32%)
<b>DROPPED MEMBERS</b> DECEASED 3 CLUB CANCELLED 0 OTHER 13 TOTAL 16	<a href="#">CLICK HERE FOR HEALTH ASSESSMENT DATA</a>	FAMILY UNIT MEMBERS 153 HEAD OF HOUSEHOLD 76 NON-HEAD OF HOUSEHOLD 77